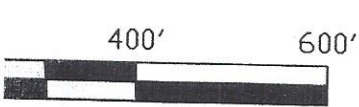
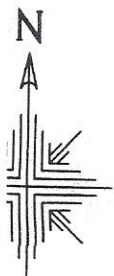
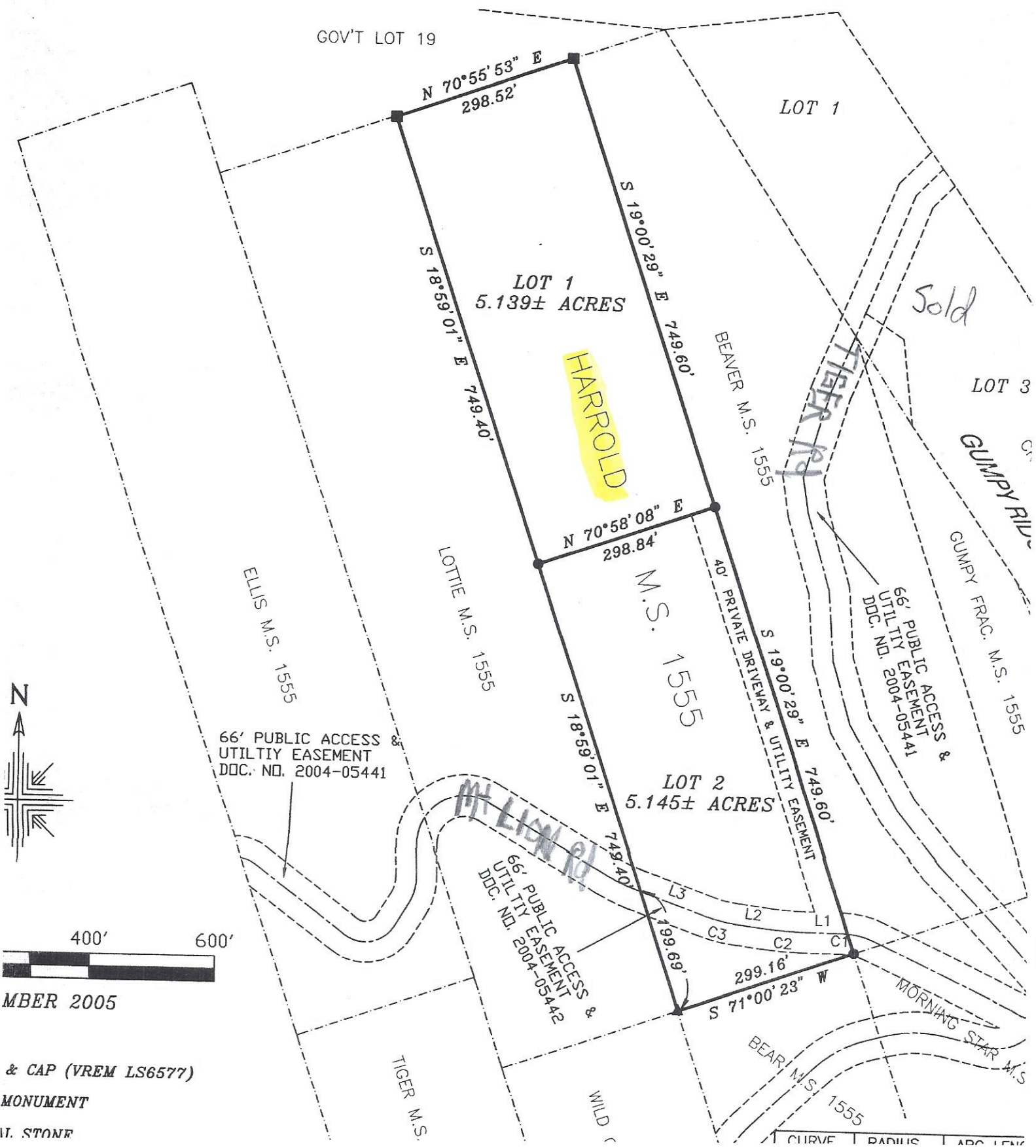


PLAT OF LOTS 1 AND 2  
 A SUBDIVISION OF HARROLD M.S. 1555, LOCATED IN THE SE1  
 SECTION 9, T4N, R3E, B.H.M., LAWRENCE COUNTY, SOUTH DA



MBER 2005  
 & CAP (VREM LS6577)  
 MONUMENT  
 W. STONE